

U.S. EARLY COMMEMORATIVES

A selection of pre 1920 U.S. Commemoratives – all sound from our vast stock. All are sound as described and are pictured on our web-site at: <http://www.hgitner.com/shop/154-us-early-commemoratives>

We have many more Early Commemoratives in stock which are accurately described including Ave-XF centering, Sound to Minor faults. Let us know what you need for your U.S. Collection.

1893 Columbian Exposition

Scott	Condition/Description	Price
230	XF/NH	\$100.00



231c XF/NH-Broken Hat variety. Exceptional Centering..... \$350.00

232 VF/NH—right margin sgl. \$100.00
233 XF/LH, Small thin, Beautifully centered..... \$35.00

234 F-VF/LH—Overall Doubled Impression due to "kiss" print—Exhibit piece, tiny thin, PFC \$100.00

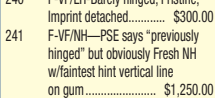
235 VF-XF/Used block of 4, couple of nibbed perfs... \$150.00

237 F-VF/LH..... \$80.00
238 XF/NH..... \$850.00
239 VF/NH-Pristine, Rich color \$600.00
239 F-VF/NH..... \$425.00

240 F+NH Plate # 77 single. \$700.00
240 XF-Sup/LH slight dist. OG \$450.00
240 F-VF/LH-Barely hinged, Pristine, Imprint detached..... \$300.00

241 F-VF/NH—PSE says "previously hinged" but obviously Fresh NH w/faintest hint vertical line on gum..... \$1,250.00

245 F-VF/LH—Appears NH-Beautiful!..... \$1,750.00
245 VF/Used—Cancel slightly heavy but image clearly visible \$800.00



245 VF/Used—Cancel slightly heavy but image clearly visible \$800.00



241 VF-XF/LH Pristine!..... \$1,100.00

1898 Trans-Mississippi Exposition

Scott	Condition/Description	Price
241	XF/LH Internal wrinkle visible on reverse only, Fresh!.....	\$1,000.00
242	VF/NH-slight gum bends \$2,000.00	
242	F-VF+NH—Rich color \$2,000.00	
242	F-VF/Barely H—Lovely & Fresh.....	\$850.00
242	VF/Used—Double Transfer in "OF" Scott listed but unpriced	\$525.00
242	Fine/Used—preprinting paperfold.....	\$600.00
243	Fine/NH—light shade.....	\$1,800.00
243	Fine/H, some dist. Gum from mount—Rich color.....	\$650.00
243	Fine/Used S-O-N NY Oct. 10, 1893.....	\$500.00
243a	F-VF/H—Olive Green.....	\$950.00
243P4	F-VF Plate proof on card	\$180.00
244	Ave-F/NH—Rich color, Fresh Gum.....	\$2,500.00
244	F-VF/LH.....	\$1,200.00
244	F-VF/Used—Bright color, Lovely!.....	\$700.00
244	Fine/Used—Very light cancel, rich color.....	\$650.00
245	Fine/NH Left sheet margin—Fresh!.....	\$4,000.00

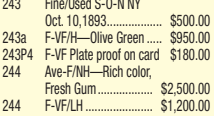
Scott	Condition/Description	Price
245	VF+Jumbo/Used-tiny thin spot.....	\$600.00
245	XF/Used-repaired across bottom, visible in fluid.....	\$500.00
245	Mint/No gum-defective, thinned along top, Nice Space filler	\$295.00

Scott	Condition/Description	Price
285-91	F-VF/Used—set to 50-cent	\$225.00
285	XF+NH Top Pl # single Gem-Post Office Fresh	\$250.00
285	F-VF/NH-H LR corner block of 4 misperp due to foldover—hinge reinforced.....	\$100.00
287	F-VF/NH.....	\$160.00
288	F-VF/NH imprint single.....	\$150.00
288	F-VF+NH Pl# + imprint pr. slight gum bend Fresh!.....	\$400.00
289	F-VF/H Pl# + imprint pr. \$250.00	
289	Just Fine/NH.....	\$200.00
289-P4	VF Large Die Proof.....	\$650.00
290, 91,	93 F-VF/No gum-Specimen optv, 291 thin.....	\$1,100.00
290	Fine+ NH.....	\$200.00
290	XF-Sup/Used.....	\$499.99
291	Fine/NH Pristine Top Margin example.....	\$750.00
291	Fine+LH.....	\$450.00
291S	XF/LH—Specimen optv at UL.....	\$550.00
292	Fine+NH.....	\$1,600.00

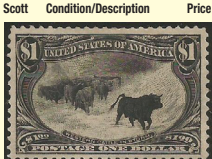
Scott	Condition/Description	Price
292	XF/H Large Margins.....	\$1,700.00
292	F-VF/LH.....	\$1,000.00
293	Ave-Fine/H—plate # & imprint pair.....	\$2,250.00
293	Ave/LH—Fresh Color.....	\$1,000.00
293	Ave-F/Used—slight back flaws.....	\$500.00

1901 Pan-American Exposition

Scott	Condition/Description	Price
294-299	F-VF/Used—light cancels	\$75.00



Scott	Condition/Description	Price
294	Ave-Fine/ NH "Sunken Ship" \$150.00	
295	XF/NH.....	\$85.00
295	VF/NH Fresh Pl. Blk (6) PFC, Scarce so nice!.....	\$475.00
295	Fine/NH—LR corner margin with printed numerals.....	\$25.00
295	F-VF/H Bottom left strip of 5 w/Pl#, imprint, hinge reinforced.....	\$50.00
297	XF/Used.....	\$25.00
298	Fine+H Bottom Plate Block—Nice!.....	\$2,350.00
298	VF/Used, interesting example on piece of cut square with Rosemont, PA cds.....	\$50.00
299	VF-XF/Used.....	\$45.00
299	VF/Used, large margins for issue.....	\$30.00



Scott	Condition/Description	Price
324	VF/NH.....	\$70.00
325	F/NH—UR Corner blk w/Pl # blk of 4 + 2 attached.....	\$575.00
325	VF/LH—Top Pl# blk of 4 w/imprint.....	\$500.00
325, 327	VF/Used S-O-N Boxed "Ponce P.R. Puerto Rico Cancel.....	\$90.00
326	Ave-F/LH bottom Pl. Blk.....	\$350.00

1907 Jamestown Exposition

Scott	Condition/Description	Price
328	VF/NH.....	\$45.00
329	F-VF/NH-Plate # block of 6—Pristine & Fresh! Well centered.....	\$600.00
330	Fine/NH.....	\$150.00
330	Ave-F/NH—Plate block of 6—Very Fresh! Typical centering	\$1,200.00

1909 Commemoratives

Scott	Condition/Description	Price
367	XF-Sup/NH PFC.....	\$200.00
368	XF-Sup/NH Pl blk right or left.....	\$220.00
368	XF/NH Right arrow blk of 4.....	\$95.00
369	XF/NH Lovely.....	\$575.00
369	VF-XF/NH UR Corner Copy PFC.....	\$400.00
369	VF/used—scarce so well centered.....	\$185.00
370	XF/NH.....	\$75.00
370	VF/LH—top pl blk of 6.....	\$65.00
371	XF/LH plate #5249 single.....	\$17.00

1914-15 Panama-Pacific Exposition



Scott	Condition/Description	Price
397	XF/NH.....	\$75.00
398	VF-XF/NH Crazy Jumbo, slight corner crease LR.....	\$75.00
398	VF-XF/NH Pl# 6314 single.....	\$50.00

1904 Louisiana Purchase Exposition

Scott	Condition/Description	Price
324	VF/NH.....	\$70.00
325	F/NH—UR Corner blk w/Pl # blk of 4 + 2 attached.....	\$575.00
325	VF/LH—Top Pl# blk of 4 w/imprint.....	\$500.00
325, 327	VF/Used S-O-N Boxed "Ponce P.R. Puerto Rico Cancel.....	\$90.00
326	Ave-F/LH bottom Pl. Blk.....	\$350.00

1907 Jamestown Exposition

Scott	Condition/Description	Price
328	VF/NH.....	\$45.00
329	F-VF/NH-Plate # block of 6—Pristine & Fresh! Well centered.....	\$600.00
330	Fine/NH.....	\$150.00
330	Ave-F/NH—Plate block of 6—Very Fresh! Typical centering	\$1,200.00

1909 Commemoratives

Scott	Condition/Description	Price
367	XF-Sup/NH PFC.....	\$200.00
368	XF-Sup/NH Pl blk right or left.....	\$220.00
368	XF/NH Right arrow blk of 4.....	\$95.00
369	XF/NH Lovely.....	\$575.00
369	VF-XF/NH UR Corner Copy PFC.....	\$400.00
369	VF/used—scarce so well centered.....	\$185.00
370	XF/NH.....	\$75.00
370	VF/LH—top pl blk of 6.....	\$65.00
371	XF/LH plate #5249 single.....	\$17.00

1914-15 Panama-Pacific Exposition

Scott	Condition/Description	Price
397	XF/NH.....	\$75.00
398	VF-XF/NH Crazy Jumbo, slight corner crease LR.....	\$75.00
398	VF-XF/NH Pl# 6314 single.....	\$50.00

Great Stock of Washington Franklins Also!

Scott	Condition/Description	Price
399	VF-XF/NH.....	\$150.00
399	VF/NH Pl # 6138 single.....	\$125.00
400	VF/NH.....	\$210.00



Scott	Condition/Description	Price
371	Superb/Used—Outrageously large margins.....	\$200.00
371	Sup/LH-Centerline Block.....	\$160.00
371	XF/NH—Set of 4 Arrow Blks.....	\$475.00
372 var	Ave-F/NH-Gripper cracks in selvage.....	\$50.00
373	XF/NH Block of 9—Unusual Multiple.....	\$250.00
373	XF/NH Top Pl# 5389 block of 6, nat. gum bends in selvage.....	\$185.00
373	VF/NH Centerline Block.....	\$295.00

1914-15 Panama-Pacific Exposition

Scott	Condition/Description	Price
397	XF/NH.....	\$75.00
398	VF-XF/NH Crazy Jumbo, slight corner crease LR.....	\$75.00
398	VF-XF/NH Pl# 6314 single.....	\$50.00



Scott	Condition/Description	Price
400	F-VF+NH.....	\$150.00
400	VF/Used.....	\$20.00
400A	F-VF+NH.....	\$240.00
400A	XF/Used San Francisco Oval cancel.....	\$30.00
401	VH cancel.....	\$60.00
402	XF/NH Deep Carmine-PSE—"natural gum stick at right".....	\$300.00
402	VF/NH Nice Rose Shade.....	\$135.00
402	F-VF/NH—Deep Shade.....	\$95.00
403	VF-XF/NH Pl#6134 single—PFC.....	\$425.00
403	F-VF/NH.....	\$250.00
404	F-VF/NH.....	\$950.00
404	F-VF+NH Block of 4.....	\$5,000.00
404	VF/Used.....	\$95.00

TIME PAYMENTS ARE AVAILABLE

SET UP YOUR ACCOUNT AND ORDER DIRECT FROM OUR WEB SITE. NOW YOU CAN PAY WITH PAYPAL.

TERMS OF SALE: Condition: Stamps are accurately described condition and priced in U.S. Payment Methods: SUS; cash, check, money order, bank transfer, Paypal, credit cards (Visa, M/C AmEx, Disc - please add 3 or 4 digit security code). Sales Tax: All orders shipped to New York addresses must add sales tax. Please indicate county of residence. Shipping/Handling Chart: U.S. under \$100, \$3.50; U.S. \$100-\$499.99, \$6.50; U.S. \$500 and over, \$8.50; Foreign, under \$100, \$5.50; Foreign \$100-\$499.99, \$15.00; Foreign \$500 and over, \$19.50. Special shipping requests such as UPS, Fedex, EMS may be extra. **Alternates:** We suggest including alternate selections when possible to avoid refunds.

SATISFACTION GUARANTEED! Any item that does not please you may be returned for a prompt refund or exchange.

HENRY GITNER PHILATELISTS INC.

P.O. Box 3077 • Middletown, NY 10940
E-mail hgitner@hgitner.com • www.hgitner.com
Tel 800-947-8267 • Tel 845-343-5151 • Fax 845-343-0068

"Philately - The quiet excitement!"

A Sampling from HGPI's vast stock of United States Early Commems. Other centering and conditions available on our website at

<http://www.hgitner.com/shop/154-us-early-commemoratives>