

MARVELOUS MODERN U.S. SPECIALS

CONVERTIBLE SELF-ADHESIVE BOOKLET PANES

A selection from our large Booklet stock of Hard to Find Booklets. (ds)= double sided
Take 10% on Booklet Pane Orders over \$250.00

Scott	Price	Scott	Price	Scott	Price	Scott	Price
3252c	\$18.00	3830De	\$55.00	4574b (ds)	\$24.00	4821a	\$20.00
3252e	\$25.00	3999a	\$32.00	4578b (ds)	\$24.00	4865b (ds)	\$22.00
3461b (ds)	\$40.00	4116b	\$17.50	4582b	\$24.00	4871a	\$20.00
3461c (ds)	\$60.00	4218b	\$16.00	4622b (ds)	\$32.50	4891b (ds)	\$27.00
3483c	\$20.00	4347a (ds)	\$17.00	4686b	\$85.00	4909b (ds)	\$22.50
3483f	\$20.00	4371b	\$17.00	4715b (ds)	\$25.00	4940b (ds)	\$26.00
3484Ag	\$20.00	4403b	\$18.00	4763b (ds)	\$42.00	4949b (ds)	\$27.00
3484Aj	\$20.00	4405b	\$22.50	4785h (ds)	\$22.50	5007b (ds)	\$22.00
3619e	\$19.00	4428b (ds)	\$16.00	4816a (ds)	\$26.00	5051c (ds)	\$29.50
3619f	\$19.00	4481b (ds)	\$32.50	4816c (ds)	\$26.00	5162a (ds)	\$33.50
3687b (ds)	\$19.00	4485b	\$20.00	4820b (ds)	\$26.00	5197b (ds)	\$20.00

All other Booklets & Panes-Early to Modern Available -Please Ask!

SCARCE US PLATE STRIPS OF 5

(except where noted)



Scott	Condition	Plate #	Price	Scott	Condition	Plate #	Price
1891	XF-Superb	#1	\$60.00	1904a	XF #4 PS-5+1	Precancelled	\$140.00
1891	F-VF	#6-PNS3	\$450.00	1907	XF #1, 3, 4	each	\$30.00
1895b	VF #14-Precancelled		Now Only \$10.00	1908	VF #2		\$250.00
1895d	VF-XF Imperf PS-5+1	#10	\$95.00	1908	F-VF #7, 8	each	\$70.00
1900	XF-Superb	#3	\$140.00	1908	F-VF #11		\$35.00
1903	F-VF	#5	\$105.00	2279a	VF-XF #1111	Imperf PS5+1	\$250.00
1903	VF	#6	\$150.00	2280b	F-VF #5	Block Tag Imperf PS-5+1	\$350.00
1903a	F-VF	#8	\$100.00	2904c	VF #S111	Imperf PS-5+1	\$350.00
1904a	VF #3	Precancelled	\$100.00	3054a	XF #5555		\$300.00
1904a	VF	Same PS-5+1	\$110.00	3054a	F-VF #5555	End of coil roll	\$300.00

Most others Available at Great Prices!

1994-2012 COMMEMORATIVE POSTAL CARDS

From Legends of the West to Scenic Landscapes, the Postal Cards showed a matching design on reverse—Many had multiple attractive designs you can collect either by Scott # or with All Different Designs. Prices as low as Original USPS retail & 25% Scott.

Complete Sets at Rock Bottom Prices

419 Mint Postal Cards (Brookman cv\$1066)	Retail \$447.50	\$395.00 + \$20.00 shipping **
951 Full USPS Packs (Bkmm cv \$1935.00)	Retail \$872.00	\$760.00 + \$25.00 shipping
415 FDC's—each set matched cachet	Retail \$880.00	\$795.00 + \$20.00 shipping

** \$5.00 - \$20.00 Shipping on individual card orders depending on size of order.

Individual Postal Card Prices available at: https://bit.ly/HGPI_PostalCards



3269v—Unissued "H" Yellow Postcard Rate

VF/Used block of 4—Clearly cancelled "Greencastle, IN, Aug 10, 1999." Possibly unique as completely sound used block

\$4,500.00

VF/NH Single w/PFC \$2,300.00

R684A 1954 \$1000 DOCUMENTARY BOOKLET

Complete Pristine Bklt w/full NH Panes of 4

F-VF (cv \$1,200.)	\$550.00
VF Panes	\$600.00

Scarce C132 40c Piper Reissue



VF/NH Singles only \$2.50
VF/NH Plate Blocks \$39.50
Rare full sheet VF/NH: \$199.00

U544c 1962 XF Mint error 5c Lincoln



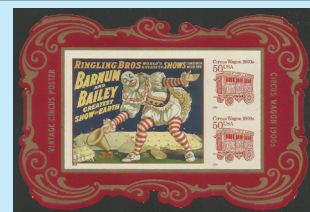
with Franklin's Head also embossed.

Envelope (CV \$130.00) \$64.95
XF/FUT cut square (CV \$60.00) \$39.50

Many other Envelopes & Postal Card Offers Available!

TIME PAYMENTS ARE ALWAYS AVAILABLE

SPECIAL SHEETS



2870 Legends of the West w/folder...	\$125.00
2095b Riverboats Special Die Cut-Strip of 5	\$ 34.50
Same sheet of 20	\$170.00
3119 Bicycling S/S Semi-Official Optv in Gold & Silver— Both for	\$10.00
3138 Bugs Bunny Die Cut	\$110.00
3205 Sylvester & Tweety Die Cut	\$ 6.50
3307 Daffy Duck Die Cut	\$7.50
3320 Aquarium w/overall tagging—strip of 4\$ 34.50	Sheet of 20 \$170.00
3392 Road Runner & Coyote Die Cut	\$ 19.50
3535 Porky Pig Die Cut	\$29.50
3843d Choreographers Tagging Omitted—strip of 4	\$34.50
Same Sheet of 20	\$170.00
4905c 2014 Circus S/S White border	\$7.25
4905c 2014 Circus Special Die cut borders	\$54.50

1610c \$1.00 CIA Invert VF/NH PSAG Cert.



VF-XF/NH PSE Cert.
\$15,500.00

See other US Errors on our website at <http://bit.ly/US-Errors>

Major Perf Varieties

	VF	NH	PI. BL.
1580B	.65	11.00	
1622C	.75	30.00	
1623Bc pair	12.50		
1711c	.75	15.00	
1795-8A Bl. 4	2.00	8.00	
1789B Scarce Perf 12	POR		
1862a	.75	4.50	
1863b	.70	6.00	
1864a	.75	4.50	
1951-A	.60	3.00	
1953-2002A Sheet	22.00		
2524A	.90	25.00	
2535a	1.00	4.50	
2723A	8.00	55.00	
C98A	4.00	75.00	
C105-8c	4.00	6.00	
C128b	\$1.25	\$6.00	
1596d single VF/NH	\$20.00		
VF/NH PB (12) - \$250.00, PB (20) - \$400.00			

VF/NH POSTAL COUNTERFEITS

As Listed & Described in Scott

807 CF1 3c Prexy VF/NH	\$40.00	5142 CF1 2016 Diwali	
F-VF/NH	\$30.00	Single	\$4.00
Ave-F/NH	\$20.00	Sheet	\$50.00
807 CF2 3c Prexy Imperf pair NH	\$80.00	5155 CF1 2017 Love Skywriting	
VF Imperf margin Single	\$50.00	Single	\$4.00
1394 CF1 8c Ike F-VF singles	\$30.00	Sheet	\$50.00
VF-XF singles	\$45.00	5158 CF1 2017 Flag coil pair	\$8.00
(Pairs 2 x singles, Blks of 4 x)		5260 2018 Flag Coil pair	\$8.00
1510 CF4 10c Jefferson Monument	\$75.00	5261 CF1 2018 Flag coil pair	\$8.00
VF	\$75.00	5261 CF2 2018 Flag coil pair	\$8.00
Fine+	\$50.00	5263 CF Unlisted 2018 flag	
4637-40 CF1 Four Flags Strip	\$30.00	Booklet tagged	
4645-86 Unlisted 2012 Block	\$30.00	single	\$10.00
Double Sided Pane of 20		Pane of 20	\$150.00
S11111	\$100.00	5263 CF unlisted	
4868 CF1 2014 Star Spangled Banner	\$8.00	Single	\$7.50
Coil pair	\$8.00	Pane of 20	\$100.00
4955-56 CF1 2015 Filigree Love	\$8.00	5285-94 CF Unlisted Frozen Treats	
Pair	\$8.00	Block of 10	\$60.00
Sheet	\$50.00	DS pane of 20	\$90.00
4959 CF1 2015 Victorian Rose/Heart	\$4.00		
Single	\$4.00		
Sheet	\$50.00		

WS4 COUNTERFEITS FROM 1919

Listed in 2019 Scott Specialized as WS4 (CF1) CV \$600.00
Excellent engraving—Uneven Perfs-No Gum. Extremely Scarce, from an Old-Time Group!

F - VF \$300.00 • VF - XF \$400.00

Copy of Chicago Postal Inspection Letter from 1920's with details accompanies each order.

SET UP YOUR ACCOUNT AND ORDER DIRECT FROM OUR WEB SITE. NOW YOU CAN PAY WITH PAYPAL. TERMS OF SALE: Condition: All items are accurately described and priced in U.S. Payment Methods: SUS; cash, check, money order, bank transfer, Paypal, credit cards (Visa, M/C AmEx, Disc—please add 3 or 4 digit security code). Sales Tax: All orders shipped to New York addresses must add sales tax. Please indicate county of residence. Shipping/Handling Chart: U.S. under \$100, \$3.50; U.S. \$100-\$499.99, \$6.50; U.S. \$500 and over, \$8.50; Foreign, under \$100, \$5.50; Foreign \$100-\$499.99, \$12.00; Foreign \$500 and over, \$15.00. Domestic orders over \$2000 are postpaid! Special shipping requests such as UPS, FedEx, EMS may be extra. Alternates: We suggest including alternate selections when possible to avoid refunds. SATISFACTION GUARANTEED! Any item that does not please you may be returned for a prompt refund or exchange.



HENRY GITNER PHILATELISTS, INC.

"Philately - the quiet excitement!"

53 Highland Ave. (P.O. Box 3077) • Middletown, NY 10940
1-800-947-8267 (94-STAMP) 845-343-5151 Fax 845-343-0068
e-mail hgitner@hgitner.com • www.hgitner.com



Sept. 7, 2020