

U.S. SAVINGS STAMPS

POSTAL NOTE STAMPS

PN1-18 VF-XF/NH	42.50
PN1-18 VF/NH	\$39.00
PN1-18 F-VF/NH	\$36.00
PN1/18 2 values on individual Full Postal Notes—not complete. Cancelled either Louisville, KY or Springfield, MO each	\$12.50

POSTAL SAVINGS

PS1 VF/NH	\$12.50
PS1 F-VF/NH	\$9.50
PS1 Just Fine/LH Top strip with imprint, star & plate number #5507	\$35.00
PS4 VF/NH	\$8.00
PS4 Fine/NH Pl# strip of 3, imprint + star	\$27.00
PS4 Ave-F/NH Wide btm Pl Bk of 6, #5504	\$120.00
PS5 VF Mint (cv \$175.00)	\$145.00
PS5 VF/Used w/9x PS4, redeemed & neatly cancelled	\$37.50



PS6 F/NH Top PB of 6 #21485, inscrt & star	\$100.00
PS6 F-NH Left PB of 6 #21485, inscription & star, as LH-gum skips	\$32.50
PS7-10 4 Pristine VF Mint Double (3x) or single (1) Postal Savings Cards. No stamps affixed. Exhibition quality Scarce Set	\$150.00
PS8 VF/NH Plate # single	\$27.00
PS8 VF/NH	\$25.00
PS8 F-VF/NH plate # single	\$24.00
PS8 (3) + PS10 (18) on single 1 part card correctly franked with \$18.75 redeemed, cancelled in purple	\$200.00
PS8 25 stamps on completed 2 pt card—redeemed & cancelled in purple	\$140.00
PS9 F-VF/NH	\$55.00
PS9 VF-XF/NH Pl # single, nat. gum skips	\$60.00
PS9 25 F-VF stamps on VF completed 2 part card. Pristine! Cancelled w/black Registry oval	\$250.00
PS10 F-VF+/NH plate # single	\$170.00

Time Payments are Always Available

POSTAL SAVINGS

PS10 F-VF/NH	\$150.00
PS10 VF/LH	\$85.00
PS11 F-VF/NH Pl # single	\$1.00
PS11 VF/NH	\$.75
PS11 F-VF/NH Pl Bk	\$5.00
PS11 VF/LH Pl Bk	\$3.50
PS11 F-VF-XF/LH-LH, Full matched set of all Plate # blocks—each of the 6 Pl #'s in 4 positions. 8 PB's NH, cv \$174.00	\$80.00
PS11 on Complete Pages \$20.00 Redeemed Booklets w/15 Stamps/side—Cleveland, OH roller Cancel each	\$15.00
PS11b VF-XF/NH Bklt pane w/Electric Eye marking. Remarkable centering for this pane	\$75.00
PS11-14 XF-Sup/NH Pl. Bkls. Remarkable	\$200.00
PS11b VF/LH bktl Pane of 10	\$25.00
PS12 F-VF/NH Pl # single	\$3.50
PS12 F-VF/NH	\$2.00
PS12 F-VF/NH PB	\$14.00
PS12 F-VF-XF/NH-LH, Full matched set of all Plate # blocks—4 corners for each of 6 Pl #s. Scarce collection 9x NH, 15x LH, (cv \$540.00)	\$270.00
PS12b Ave-F-VF/NH Bklt pane—perfs VF, cut ave	\$25.00
PS13 F-VF/NH	\$6.00
PS13 F-VF/LH Pl # single	\$5.00
PS13 VF/NH block of 4 w/a few blind perfs between top 2 stamps	\$25.00
PS13 XF/NH PB slight toning on gum as LH	\$130.00
PS13 Just Fine/LH	\$38.00
PS13 Just F-VF-XF/LH-NH Matched set of PL# 22719 3x VF+/NH	\$120.00
PS13 F-VF-XF/LH-NH Matched set of Pl #22718 Blocks—3x NH	\$130.00
PS13 & PS14 w/Punchhole cancels from redemption booklets.	
PS13 21 x on pages 7-10	\$30.00
PS14 16x on pages 11-12	\$35.00
PS14 XF-Superb/NH	15.00
PS14 F-VF/NH plate # single	\$8.50



PS14 F-VF/NH	\$8.00
PS14 on Page 6-6 of Redeemed Booklet 8+5 stamps, Niles OH roller stamp	\$95.00
Same but 8 stamps each side CA July 18, 1942 cds	\$95.00
PS14 on Page 13-14 of Redeemed Booklet, 8 +5 stamps Glendale CA	\$85.00
PS14 VF-/NH UL Pl Bk	\$60.00
PS14 F-VF-XF-all but 1 LH. Full matched set of both pl. #'s in all 4 positions (cv \$600.00)	\$260.00



PS15 XF-Superb/NH Spectacular	\$125.00
PS15 VF-XF/NH Top pl. # single #22730	\$70.00
PS15 XF/NH	\$60.00
PS15 F-VF/NH	\$32.00
PS15 VF+/NH Top Plate Bk of 6 #22730	\$395.00
PS15 VF-XF/NH-LH full set of all 9 plate # singles. This set could take years to assemble (cv \$382.50+)	\$295.00
PS15 Used with Messillon, Ohio Roller Cancels VF-XF	\$30.00
F-VF	\$25.00
Fine +	\$20.00
F-VF w/SE	\$15.00

SAVINGS STAMPS

S1-4 VF-XF/NH 1st set—Undervalued	\$40.00
S1 F-VF/NH wet printing	\$0.45
S1 VF-/NH Plate blk #167089	\$3.00
S1b F-VF/NH UL Plate blk—dry gum	\$2.75
S1b 10c dry print. 65 x (some faulty) affixed to 1958 Savings Stamp Album	\$20.00
S1, S1b Completed Savings Bond Album w/187 stamps, but never redeemed for a \$25.00 Bond. Mixed Wet and Dry Printing stamps	\$45.00
S1b 105 x affixed to 1958 \$20.00 Savings Stamp Album	\$14.99
S2 (10), S6 (60)-70 25c stamps in an almost filled Savings Stamp Album. Less common with only Savings Stamps, (cv as unused \$195.00)	\$45.00
S2 F-VF/NH—UR PB wet printing	\$25.00



S2a VF-XF/NH bktl.pane w/Electric Eye markings. Rare & Undervalued. Cg \$800.00 - sold for much more recently at Auction!	\$975.00
S3 VF/NH	\$10.50
S3a VF/NH PB dry print	\$40.00
S3a F-VF/NH UR Pl. bkt	\$35.00
S4 F-VF/NH	\$9.00
S4 XF/NH PB dry print	\$120.00
S4 F-VF/NH PB dry print	\$80.00

TAKE 10% DISCOUNT ON ORDERS OVER \$350.00 WHERE NO ONE ITEM IS MORE THAN 10% THE VALUE OF THE ORDER

SAVINGS STAMPS

S5 XF/NH Lovely Centering	\$110.00
S5 VF-/NH Undervalued	\$95.00
S5 VF/NH—Scarce & Undervalued-top marg.	\$85.00
S6 F-VF/NH Pl. Bk	\$7.00
S6a VF/NH Unexploded bktl w/ 1 pane	\$55.00
S6a F-VF/NH 2 pane unexp. bktl Scarce!	\$135.00
S6a VF/NH bktl pane	\$60.00
S7 F-VF/NH UR Pl. block	\$8.00
S7a VF/NH Scarce! (cv \$250.00)	\$250.00



S7 Color Mixing Error—Lilac instead of Dark Blue—with BEF letter of explanation—Should be Scott listed. (Only a few in stock) Single VF/NH Block of 4 (1x)

WS1 F-VF/NH Savings with OG	\$25.00
WS1 VF-XF/H—Fresh	\$15.00
WS1 2 Ave-Fine stamps affixed to WS2 VF/NH, LR corner SE example	\$115.00
WS2 VF/LH appears NH, hard to find OG	\$100.00
WS2 F-VF/OG minor faults	\$35.00
1919 VF unused 3-Part folded War Savings Certificate for W2/W3 stamps to be affixed	\$25.00
Same F-VF	\$20.00
1920 Series 3-Part folded War Savings Certificate for W2-W3 F-VF/mint, slight tears	\$25.00
WS3 VF/Dist. OG—Minor faults	\$300.00



WS3 XF/Used, Handstamped—manuscript cancel, copy of PFC	\$600.00
WS3 VF/dist. OG, Thin	\$300.00
WS3 VF/Used pair, Light Manuscript cancel, right stamp invisible crease	\$800.00
WS3 XF/Used Light M/S Cancel-Beautiful!	\$575.00
WS3 VF-XF/Used, Light M/S cancel	\$500.00
WS3 F-VF/Used neatly affixed to War Savings Certificate. Clean	\$500.00
WS4 2 F-VF stamps affixed to clean 2-part 1919 folder, Fresh!	\$300.00
WS4 VF+/Expertly regum.-appears NH Rare	\$350.00
WS4 VF/No gum	\$295.00
WS4 VF/No gum, SE	\$195.00



WS5 XF-Superb/LH PFC—Extraordinary!	\$775.00
WS5 F-VF/LH-gum crease visible on rev.	\$450.00

WAR SAVINGS

WS5 F-VF/appears NH-Expertly regummed	\$375.00
WS5 Ave-F-/Used-No gum	\$225.00
WS7 VF/NH	\$7.00
WS7—right margin block of 4 transitional Dry printing error esp. on 2 rt. Stamps	\$60.00
WS7 VF/NH Pl Bk	\$7.00
WS7 VF/NH Pl Bk	\$4.00
WS7b XF/NH Booklet pane w/Electric Eye marking. Scarce so nice!	\$60.00
WS7 VF/NH Set of 2 Pl. strips of 20 (LR #149494, 149495) w/shadows #'s "494/495" & "95/494" would normally be between 2 sheets	\$95.00
WS7 VF/NH Block of 20, bottom pair is double paper + Scotch tape attached by P.O.	\$75.00
WS8 F-VF/NH	\$1.70
WS8 VF-XF-/NH offset on back as LH	\$.60
WS8 XF/NH PB	\$10.00
WS8 VF/NH Pl Bk	\$6.00
WS8 F-VF/NH Pl Bk	\$5.00
WS8b LH EE type 1 bktl pane of 10 miscut	\$50.00
WS8b Fine-/LH EE bktl pane	\$25.00
WS8b F-VF/NH Unexploded bktl of 4 panes	\$120.00
WS8 Ave-F/NH unexp. bktl of 4 panes Fresh	\$70.00
WS9 VF-XF/NH	\$4.00
WS9 VF/NH	\$3.25
WS9 XF/LH	\$2.75
WS9 VF-XF/NH Pl Bk	\$20.00
WS9 VF-NH PB	\$12.50
WS9 VF-VF/NH Pl Bk, gum bend	\$11.00
WS10 VF-XF/NH	\$11.00
WS10 F-VF/NH	\$10.00
WS10 Fine+/NH	\$8.00
WS10 VF/NH PB UL #149595 or 149590	\$52.00
WS10 F-VF-/NH Pl. Bk	\$45.00
WS11 VF-XF/NH	\$50.00
WS11 F-VF/NH—Top plate # single	\$45.00
WS12 F-VF/NH	\$2.00
WS12 VF/LH	\$1.75
WS12 F-VF/NH line pair	\$5.50
WS12 VF+/LH	\$4.00
WS12 F-VF-NH coil starting strip of 4 attached to cover w/LP & 2 singles	\$80.00



WS12 VF-XF/LH-NH strip of 3 w/heavy "ink smear" at top	\$50.00
WS12-13 VF/NH line strips of 4	\$37.50
WS12-13 F-VF Line pairs	\$19.50
WS13 VF/NH	\$4.50
WS13 VF-NH-coil starting strip of 4 w/line pair	\$32.50
WS12-13 F-VF/NH—Start + ending coil roll leaders printed strips fr/rolls of 500. Each strip 4 stamps, 1 partially adhered to leader strip. CV \$66.00 as normal stamps - Scarce Set!	\$85.00
WS12-13 VF/NH Leader printed strips of 4 from beginning of roll of 500	\$60.00
Same with WS12 F-VF & WS13 VF	\$50.00

WS4 SCOTT UNLISTED AS USED (ON PIECE)

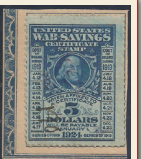
Cancelled "190" in pen w/light purple R/S F-VF/Used	\$150.00
Same Straight Edge	\$100.00

WS4 COUNTERFEITS FROM 1919

It will be listed in 1919 Scott. No Gum Excellent engraving, Poorly Perforated. Extremely scarce, from an Old-Time Group!

Fine \$200.00 • F-VF \$300.00 • VF-XF \$400.00

Copy of Chicago Postal Inspection Letter from 1920's with details accompanies each order.



SET UP YOUR ACCOUNT AND ORDER DIRECT FROM OUR WEB SITE. NOW YOU CAN PAY WITH PAYPAL.

TERMS OF SALE: Condition: Stamps are accurately described condition and priced in \$U.S. **Payment Methods:** \$US; cash, check, money order, bank transfer, Paypal, credit cards (Visa, M/C AmEx, Disc)—please add 3 or 4 digit security code. **Sales Tax:** All orders shipped to New York addresses must add sales tax. Please indicate county of residence. **Shipping/Handling Chart:** U.S. under \$100, \$3.50; U.S. \$100-\$499.99, \$6.50; U.S. \$500 and over, \$8.50; Foreign, under \$100, \$5.50; Foreign \$100-\$499.99, \$12.00; U.S. \$500 and over, \$15.00. Special shipping requests such as UPS, Fedex, EMS may be extra. **Alternates:** We suggest including alternate selections when possible to avoid refunds. **SATISFACTION GUARANTEED!** Any item that does not please you may be returned for a prompt refund or exchange.



HENRY GITNER PHILATELISTS, INC.
"Philately - the quiet excitement!"
 53 Highland Ave. (P.O. Box 3077) • Middletown, NY 10940
 1-800-947-8267 (94-STAMP) 845-343-5151 Fax 845-343-0068
 e-mail hgtnr@gitner.com • www.gitner.com