

Cut Squares

Scott	Condition	Description	Price
U1	VF	Slight toning	\$200.00
U6	VF	Tiny crease LR	\$2,000.00
U6	Fine	Minor wrinkle LR	
		fresh—A great rarity	\$1,400.00
U11	Superb	FC 41 x 42mm	\$250.00
U12	Fine		\$50.00
U16	F-VF/Used		\$40.00
U18	F-VF/Used		\$80.00
U19	F-VF		\$15.00
U26	Ave	Soiled. Mf.	\$5.00
U27	F-VF	Soiling	\$6.25
U33	VF	Reprint	\$45.00
U34	F-VF	Some toning	\$12.00
U35	VF-XF/Used	Baltimore, MD cds	\$4.00
U35	F-VF/Used		\$2.50
U36	Superb	Jumbo	\$62.00
U36	VF	White spot on blue	\$30.00
U40	VF	Slight soiling	\$13.00
U40a	F-VF		\$18.00
U42	F-VF	Mis-cut, stains	\$25.00
U43	F-VF	Cut to shape, rebacked	
			\$10.00
U50	F-VF		\$8.00
U50	Fine		\$7.00
U54	VF	Slight toning	\$10.00
U54	VF/Used	Wrinkle	\$5.00

Ordering is easy! Toll Free in U.S. and Canada 1-800-947-826.7 FAX it 845-343-0068, r call 845-343-5151 or email us hgitner@hgitner.com

U54	F-VF/Used		\$4.00
U56	VF-XF		\$15.00
U56	VF+/Used	Nice	\$5.00
U56	VF/Used	FC—slight creasing	\$5.00
U58	XF	Jumbo FC	\$10.00
U58	VF		\$6.50
U58	F-VF/Used		\$0.75
U59	VF-XF	FC	\$7.50
U59	VF-XF		\$6.50
U59	VF		\$6.00
U59	F-VF		\$4.50
U59	VF/Used		\$0.60
U60	XF-Superb	FC	\$55.00
U62	Ave	Stains	\$20.00
U64	F-VF	Rebacked over faults	
			\$10.00
U68	Ave-Fine		\$55.00
U70	Just Fine		\$25.00
U70	F-VF/Used	Thin	\$22.50
U71	Fine/Used		\$28.00
U72	Fine		\$36.00



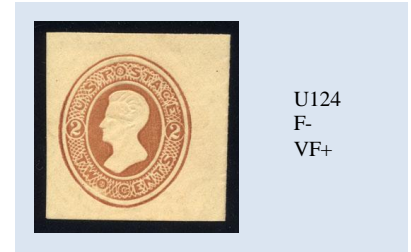
U72a
VF-XF

U72a	VF-XF		\$62.00
U72a	F-VF		\$42.50
U73	VF		\$60.00
U73	F-VF	Thin UL	\$20.00
U73	Fine		\$37.50
U74a	F-VF	Rebacked over faults	
			\$10.00
W77	Superb	Jumbo	\$35.00
W77	Superb	Slight bend UR	\$30.00
U78	F-VF		\$16.00
U79	VF		\$11.50
U80	VF		\$6.00
U82	F-VF/Used		\$0.50
U83	F-VF/Used	Crease	\$0.40
U84	Fine+		\$2.00
U85	F-VF		\$12.00
U86	XF-Superb		\$32.00
U86	VF		\$22.50
U86a	Fine		\$10.00
U88	Just Fine		\$17.00
U88	Ave-F	Faults	\$8.00



U90
XF
with
cert

U90	XF	FC APS Cert	\$550.00
U98	XF-Sup		\$225.00
U98	VF		\$195.00
U99	XF-Sup		\$95.00
U99	F-VF		\$57.50
U100	F-VF		\$95.00
U101	Superb	37mm x 42mm	\$200.00
U101	XF		\$180.00
U110	F-VF	Unknown as Carmine	
			\$500.00
U113	Superb		\$2.00
U113	XF	FC	\$2.00
U113	VF	FC	\$1.75
U113	VF+		\$1.50
U113	VF		\$1.25
U113	F-VF		\$1.00
U113a	XF-Superb	FC	\$6.75
U114	VF-XF	Natural Ink Error LL— Extra Ink	\$5.00
U115	XF	FC	\$3.75
U115	XF		\$3.25
U115	VF	FC	\$3.15
U115	VF		\$2.75
U115	XF	NI	\$3.00
U115	VF		\$2.50
U115	XF/Used	FC	\$3.00
U116	VF-XF	FC	\$0.60
U116	VF	FC	\$0.50
U117	VF-XF		\$5.00
W120	Jumbo		\$1.00
W120	VF		\$0.75
W120	F-VF		\$0.55
W120a	VF	Dark blue	\$5.00



U124
F-
VF+

U124	F-VF+	Nice	\$500.00
U135	VF	32.5mm x 37mm	\$250.00
U142	Superb		\$7.00
U142	VF		\$4.75
U163	VF		\$0.85
U166	Superb	FC	\$6.75
U166	XF	FC	\$5.75
U166	VF		\$4.50
U166	F-VF		\$3.00
U167	XF	FC	\$3.65
U167	XF		\$3.25
U167	F-VF		\$2.00



U170
VF
Used

U170	VF	Used—Extremely Rare! (cv \$11,500.00 mint)...	\$1,200.00
U178	XF-Superb	FC	\$7.50
U178	XF	Die 2	\$7.00
U189	XF		\$5.00
U189	Superb/Used	FC—Philadelphia PA RD cds	\$3.50
U195	F-VF	Heavily hinged	\$100.00
U204	Superb		\$50.00
U204	XF-Sup	FC	\$52.50
U204	F-VF		\$25.00
U207	Superb	FC	\$90.00
U210	Superb	FC	\$160.00
U211	Superb	FC	\$82.50
U211	XF	FC	\$73.00
U211	XF		\$66.00
U211	VF		\$57.00
U213	VF-XF	35mm x 38mm	\$675.00
U216	Superb.		\$112.00

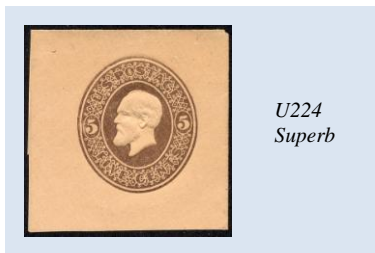
Abbreviations:

PFC = Philatelic Foundation Certificate
 PSE = Professional Stamp Expertising
 APS = American Philatelic Society
 FC = Full Corner MF = Minor Faults
 LS = Light Stain P = Pinhole
 NI = Natural Inclusion TS = Thin Spot
 TR = Tear

Scott Condition Description Price



U217	Superb	\$129.00
U218	VF	\$21.00
U218	F-VF	\$15.00
U219	F-VF	\$15.00
U219	Fine+	\$12.00
U223	Superb	\$4.25
U223	F-VF	\$3.00



U224	Superb	FC.....	\$122.50
U226	Superb	41mm x 44mm ..	\$250.00
U227	XF-Sup	FC.....	\$4.50
U227	F-VF	\$2.00
U230	Superb	\$9.00
U231	XF	FC.....	\$4.50
U231	XF	\$4.00
U231	VF-XF	FC.....	\$3.75
U233	XF	\$21.50
U234	VF	\$4.50
W235	XF	\$14.00
U239	VF	\$16.00
U239	VF	\$12.00
U243	VF-XF	FC.....	\$90.00
U243	VF	FC.....	\$85.00



U244	VF	\$200.00
U244	VF+	\$210.00
U246	XF-Sup	39mm x 42mm ..	\$275.00
U248	VF-XF/Used	66mm x 43mm, Prescott AZ Territorial PM.....	\$450.00
U251	XF-Sup	FC.....	\$5.00
U256	XF	FC.....	\$7.50
U256	VF-XF	\$6.50
U256	F-VF	\$5.00
U261	VF	\$8.00
U262	XF=Sup	FC.....	\$17.00
U263	XF-Sup	FC.....	\$15.00
U265	XF	\$12.50
U273	XF	FC 43 x43mm.....	\$200.00
U274	XF	FC 37 x 41mm.....	\$200.00
U276	VF-XF	\$450.00
U277	VF-XF	\$0.40

Scott Condition Description Price

U277	VF	FC.....	\$0.35
U277	F-VF	\$0.25
U278	XF	\$0.45
U279	XF-Sup	\$7.50
U280	XF-Sup	\$2.75
U280	XF	FC NI.....	\$2.00
U280	XF	FC.....	\$2.50
U280	VF	\$1.80
U281	Superb	\$3.00
U281	XF	\$2.75
U281	VF	\$2.25
U281	F-VF	\$1.75
U286	VF+	35.5mm x 42mm	\$165.00



U290	VF+	38mm x 38mm...	\$600.00
U291	VF	\$21.00
U294	Superb	FC.....	\$0.55
U294	XF	\$0.40
U294	VF	\$0.30
U295	XF	\$5.00
U296	XF	\$2.25
U296	VF	\$2.00
U296	F-VF	\$1.35
U311	VF	FC.....	\$0.30
U311	XF	\$0.25
U311	VF	\$0.20
U311	F-VF	\$0.15
U312	XF	FC.....	\$0.40
U313	XF	FC.....	\$0.50
U313	VF	\$0.30
U314	XF	FC.....	\$0.50
U314	VF	\$0.40
U315	XF	FC.....	\$1.60
U315	VF	\$1.25
U316	VF	\$2.25
U317	F-VF	\$1.50
U323	VF-XF	\$295.00
U324	F-VF	\$1.65
U324a	Superb	\$3.25
U324a	XF-Sup	Jumbo.....	\$3.25
U326	Superb	\$6.00
U326	F-VF	\$3.50
U327	XF	\$4.25
U328	VF-XF	\$6.00
U330	XF	FC.....	\$3.00
U330	VF	\$2.25
U330	F-VF	\$1.75
U331	XF	FC.....	\$4.00
U338	Superb	\$40.00



U338a	VF-XF	\$32.50
U339a	XF-Sup	\$37.50
U341a	Superb	Jumbo—FC.....	\$45.00

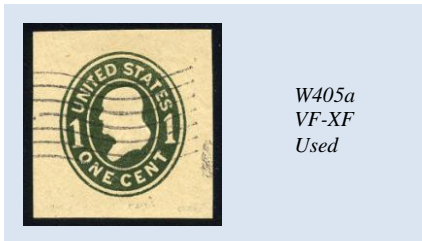
Scott Condition Description Price

U343	VF-XF	\$55.00
U343	VF	\$50.00
U348-51	XF	FC.....	\$30.00
U348-51	VF-XF	\$25.00
U348-51	F-VF	U348-49 FC.....	\$19.00
U348-51	F-VF	\$18.00
U348	VF	FC.....	\$1.60
U349	VF	\$1.00
U349	F-VF	\$0.90
U350	XF	FC.....	\$6.00
U350	VF	\$4.00
U350	F-VF	\$3.00
U351	F-VF	\$12.50
U352	VF-XF	\$1.35
U352	VF	\$1.20
U353	Superb	\$4.50
U353	XF	\$4.00
U353	VF	\$3.25
U354	XF	\$7.50
U355	XF	\$9.00
U356	XF	\$2.00
U356	VF-XF	\$1.50
W357	Superb	\$2.25
U358	XF-Sup	\$2.25
U359	XF	FC.....	\$20.00
U360	VF	\$16.00
U361	Superb	FC.....	\$55.00
U361	XF-Sup	\$45.00
U361	XF	\$42.50
U362	XF	FC.....	\$0.40
U362	VF	\$0.20
U363	XF	FC.....	\$1.75



U363	VF-XF	\$1.25
U363	VF	\$0.90
U364	VF-XF	FC.....	\$1.00
U364	VF-XF	\$0.90
U364	F-VF	\$0.65
U365	VF	\$0.80
U366	F-VF	Used-wrinkles.....	\$1.25
U367	XF	\$4.50
U369	VF-XF	\$15.00
U369	VF	\$14.50
U374	XF-Sup	FC.....	\$10.25
U374	XF	\$9.00
U374	VF-XF	\$8.25
U377	XF-Sup	FC.....	\$9.00
U379	XF	\$0.60
U379	F-VF	\$0.40
U380	XF	\$8.50
U381	Superb	\$13.00
U383	XF	\$2.75
W384	F-VF	\$1.25
U385a	VF	Used—pink.....	\$1.00
U385b	XF	Red.....	\$1.50
U387	VF	\$1.25
U388	XF	\$1.25
U395	VF-XF	FC.....	\$0.60
U400	Jumbo	FC.....	\$0.40
U400	XF	\$0.25
U400a	VF-XF	\$0.60
U401	VF-XF	Natural wrinkle.....	\$1.25
U401	VF	\$1.25

Scott	Condition	Description	Price
U402	Superb	FC—Die 1 Orange buff.	
		\$8.50
U402a	XF	Die 2 Used.....	\$9.50
U402c	Superb	FC—Die 4	\$9.00
U402c	Superb	Die 4	\$8.00
U402c	VF	\$5.50
U403	Superb	\$7.25
U403	VF	\$5.50
U403c	XF-Sup	Die 4.....	\$6.50
U404a	Superb	\$3.75
W405	Superb	\$0.80
W405	F-VF	\$0.35



W405a
VF-XF
Used

W405a	VF-XF	Used—Die 2.....	\$17.50
W405b	Superb	Die 3.....	\$9.00
W405b	XF	Used—Die 3.....	\$3.00
U406	Superb	\$0.80
U406	XF	FC.....	\$0.70
U406	VF-XF	\$0.60
U406	VF	\$0.55
U406b	Superb	FC Die 3--White....	\$0.75
U406b	XF	Die 3.....	\$0.60
U407	VF-XF	FC.....	\$4.25
U407b	VF-XF	Die 3.....	\$3.00
U407b	F-VF	Die 3.....	\$2.25



U408a
XF-
Sup

U408a	XF-Sup	\$225.00
U408a	VF	Die 2—2 Distinct Locks in Hair! Only	\$150.00
U408b	XF	Die 3.....	\$5.25
U409	XF	\$4.25
U409	VF-XF	\$4.00
U409	VF	FC.....	\$3.50
U409	VF	\$3.25
U409b	Superb	Die 3.....	\$4.75
U409b	XF	Die 3.....	\$4.50
U409b	VF-XF	Die 3.....	\$4.00
W410	XF	\$26.00
U411	VF-XF	\$0.25
U411b	F-VF	Used—Die 3.....	\$0.15
U411e	Just Fine	Used—Die 6.....	\$0.10
U412	XF	\$0.40
U413	VF-XF	nat. inc.....	\$0.25
U413a	F-VF	Used—Die 2.....	\$0.15
U413e	XF-Sup	Used—Die 6 wove	\$0.75
U414c	VF-XF	Die 4 wove	\$0.70
U414g	Superb	FC—Die 8	\$37.50

Time Payment plans available!
Please inquire – we are happy to set up a
schedule to suit your needs

Scott	Condition	Description	Price
W415	Superb	Jumbo—FC Die 7.....	
		\$100.00
U415b	VF-XF	\$3.75
U416	XF	FC—Die 2	\$1.50
U417a	Superb	\$0.80
U417a	XF	\$0.70
U418a	Superb	Jumbo	\$5.75
U418a	Superb	Die 1	\$5.50
U420	VF	\$0.20
U420	F-VF	\$0.15
U420b	Jumbo	Used—Die 3-Boston MA 1923 cds + bar	\$0.20
U420dp	XF	Precancel	\$0.35
U421	XF	FC—Die 1	\$0.45
U421	F-VF	Used	\$0.20
U421b	VF	\$1.00
U422	XF	\$1.60
U423	VF	\$0.30
U423	F-VF	Precancel	\$0.25
U424	XF-Sup	FC.....	\$5.00
U425	XF	\$0.25
W428	XF	Used 12/3/1923 cds	\$6.00
U429	XF	\$0.25
U429	VF	\$0.15



U429b
XF-
Superb

U429b	XF-Sup	FC—Die 3	\$38.00
U429b	VF-XF	FC.....	\$33.00
U429c	VF-XF	Die 4.....	\$18.00
U429d	F-VF	Used	\$0.25
U429e	XF	FC—Die 6	\$0.50
U429e	Jumbo	Used—Die 6 10/22/17 Charles River Ma cds	\$0.25
U429f	Jumbo	Used—Die 7 5/30/35 Somerville, Ma cds.....	\$0.20
U429g	Jumbo	Used—Die 8 12/29/23 W. Stoughton Ma	\$0.25
U429h	XF	Used—Die 9 10/4/39 Halifax Ma cds	\$0.25
U430	VF	FC.....	\$0.25
U430	VF	\$0.25
U430b	VF-XF	Die 4.....	\$33.00
U430e	Jumbo	Used—Die 7 3/27/24 Cambridge, Ma cds.....	\$0.25
U431	VF	\$1.35
U432	VF-XF	\$0.25
U432	F-VF	\$0.20
U432b	VF-XF	Die 2.....	\$26.00

Scott	Condition	Description	Price
U432c	XF-Sup	FC—Die 2 RS LH Barkhausen Collection.....	\$130.00
U432c	VF	FC—Die 3	\$97.50
U432d	VF	Die 4	\$40.00
U432h	F-VF	Used—Die 8	\$0.20
U432i	F-VF	Used—Die 9	\$0.20
W433	XF	\$0.20
U436	XF	FC	\$0.30
U436	VF	\$0.25
U436	Fine	\$0.15
U436a	VF	Used—Die 2	\$0.20
U436b	VF	Used—Die 5	\$0.50
U436d	VF	Used—Die 7	\$0.50
U436f	XF	Used—Die 9	\$0.25
U436h	XF	FC Color Error.....	\$27.00
U436h	XF	FC--Color Error	\$30.00
U436h	XF	Color error	\$24.00
U436h	VF	Color error	\$20.00
U437	Fine	\$0.20
U437g	XF	Carmine color error.....	\$295.00
U438	Superb	\$18.00
U438c	XF	FC—Die 7	\$20.00
U439	F-VF	Used.....	\$0.20
U439e	F-VF	Used—Die 7	\$0.20
U439f	VF	Used—Die 9	\$0.20



U439g
Superb

U439g	Superb	Acrrmine error APS Cert	\$200.00
U440	Superb	FC	\$1.75
U440	XF	FC.....	\$1.30
U440	VF-XF	\$1.10
U440	F-VF	\$0.80
U441	F-VF	\$1.40
U442	Superb	FC.....	\$3.00
U442	VF	\$2.00
U443	XF	FC.....	\$2.25
U443	VF+	\$2.00
U444	XF	FC.....	\$3.40
U445	XF	FC.....	\$3.00
U446a	Superb	FC.....	\$13.00
U447b	VF-XF	\$9.00
U451b	XF	FC—Die 5	\$12.00
U454a	XF	FC—Die 1	\$225.00
U454c	XF	FC—Die 7 ex. Barkhausen	\$115.00
U456	XF	FC 41 x 38mm ...	\$200.00
U456a	VF	Die 5	\$150.00
U457	XF	37mm x 37xx.....	\$280.00
U457a	XF	Die 5	\$220.00
U457a	VF	Die 5	\$195.00
U457b	VF	Die 7	\$475.00
U458f	Superb	FC	\$85.00
U459	XF	\$2.10
U460	VF-XF	FC.....	\$2.50

Scott	Condition	Description	Price
-------	-----------	-------------	-------

U462	XF	41mm x 42mm ...	\$395.00
U462	VF	38.5mm x 40mm	\$325.00



U463
XF

U463	XF	FC—PSAG Cert	\$.750.00
U463	XF	37mm x 40mm ...	\$650.00
U464	XF-Sup	FC 43 x 42mm...	\$750.00
U465a	XF-Sup	Die 3, Type 4 Surcharge, 44mm x 42mm, PFC	\$1,150.00
U468	XF	Die 1	\$0.50
U468	VF		\$0.45
U468	F-VF		\$0.35
U469	Superb		\$3.00
U470	Superb		\$5.25
U470e	Superb		\$.72.00
U471	Superb		\$5.25
U471e	Superb	FC—Jumbo	\$150.00
U474	XF-Sup	FC	\$185.00
U475	VF		\$125.00



U476
XF

U476	XF		\$165.00
U477	XF-Sup	42mm x 41mm ...	\$100.00
U478	XF		\$210.00
U481-W485	VF+-Sup		\$6.00
U481	VF-XF		\$0.20
U481a	F-VF	Used—Die 8 Lancaster, MA	\$0.40
U481b	XF	FC—Purple error	\$.55.00
U481b	XF		\$50.00
U482	VF	FC	\$0.75
U482	VF		\$0.50
U482a	XF	Die 8—Amber	\$1.25
U483	VF		\$1.00
U484	VF-XF	Wrinkles	\$2.00
U485	VF-XF		\$0.60
U486	Superb	FC 41 x 40 mm...	\$425.00
U490b	Superb	FC	\$.35.00
U491b	Superb	FC	\$110.00
U492a	VF-XF	Die 4—PSE cert	\$.475.00
U494	VF-XF		\$.225.00
U494a	Superb	FC—Die 3, PFC	\$.900.00
U495	VF-XF		\$0.50
U495a	Superb	FC	\$.75.00



U495a
XF

U495a	XF	FC	\$.65.00
U496b	VF-XF	Die 4	\$.12.00

Scott	Condition	Description	Price
-------	-----------	-------------	-------

U498	VF-XF		\$1.00
U499	XF	FC—natural wrinkle by "E" in cent	\$6.00
U500	VF		\$45.00
U502	XF	FC	\$185.00
U503	VF		\$135.00
U504	XF-Sup	FC	\$295.00
U508A	Superb	Jumbo FC 50mm x 50 mm	\$2,600.00
U510	VF-XF	1 x sold	\$2.00
U510	VF	FC	\$2.00
U510	VF		\$1.75



U511
Superb

U511	Superb		\$165.00
U512	XF		\$6.00
U513	Superb		\$5.00
U513	VF-XF		\$4.00
U513a	Superb	FC—Die 4	\$9.00
U513a	VF-XF	Die 4	\$4.00
U515	VF-XF		\$0.30
U515	VF		\$0.25
U515a	VF	Die 2	\$12.00
U517a	Superb		\$6.00
U522	XF	FC	\$1.00
U522	XF		\$0.80
U522	VF	FC	\$0.70
U522a	XF	FC	\$5.00
U523-38	XF	FC	\$20.00
U523-28	VF-XF		\$15.00
U523-28	VF	FC	\$15.00
U523-28	VF		\$12.50
U523	VF		\$0.60
U524	VF		\$1.25
U525	XF	FC	\$0.40



U525a
XF

U525a	XF	FC	\$40.00
U525a	F-VF		\$24.00
U529	XF	FC	\$4.50
U529	VF-XF		\$4.00
U529	VF		\$3.50
U529	F-VF		\$2.50
U530	XF-Sup	FC	\$9.00
U530	XF		\$8.25
U531	VF-XF		\$8.00
U532	VF		\$2.75
U532b	VF	Die 3	\$3.50
U532b	VF	Pre-canceled	\$1.65
U533	XF		\$0.40
U533b	VF	Die 2	\$0.75
U534	VF-XF		\$0.30
U534	VF		\$0.25

Scott	Condition	Description	Price
-------	-----------	-------------	-------

U534a	VF	Die 1	\$0.40
U535	VF	Precancel	\$1.00
U536	VF		\$0.45
U537	VF		\$1.75
U537b	VF		\$2.50
U538	XF-Sup		\$0.50
U539a	VF-XF	Die 7	\$7.00
U539b	VF	Die 9	\$11.00
U543	XF	FC	\$0.40
U544	XF	FC	\$0.65
U544c	XF	FC-Die 2 Lincoln w/albinio Franklin head	\$39.50



U544c
Die 2
VF

U544c	VF	Die 2	\$30.00
U545	VF		\$0.70
U545a	VF-XF	Type II	\$0.70
U546	VF-XF	FC	\$0.40
U547	XF	FC	\$0.40
U548	XF-Sup	FC	\$0.45
U548	XF	FC	\$0.40
U548A	XF	FC	\$0.40
U549	XF	FC	\$0.75
U550	XF	FC	\$0.60
U551	VF	FC	\$0.40
U553a	VF		\$1.50
U554	VF-XF	FC	\$0.40
U554	VF		\$0.30
U555	VF-XF	FC	\$0.50
U555	VF		\$0.40
U561	VF-XF	FC	\$0.75
U561	VF	FC	\$0.60
U562	VF-XF	FC	\$1.40
U562	VF-XF		\$1.25
U563	XF	FC	\$0.45
U564	VF		\$0.25
U565	VF		\$0.35
U566	VF-XF	FC	\$0.30
U567	VF		\$0.25
U576	VF		\$0.20
U578	VF-XF	FC	\$0.25
U579	VF		\$0.20
U580	VF		\$0.25
U581	VF		\$0.20
U582	VF		\$0.20
U583	VF		\$0.35
U584	VF	FC	\$0.60
U586	VF	FC	\$0.30
U587	VF		\$0.30
U588	VF	FC	\$0.30
U589	VF-XF	FC	\$0.25
U590	XF	FC	\$0.25



U601a
XF

Scott	Condition	Description	Price
U591	VF	\$0.20
U592	VF	FC.....	\$0.30
U593	VF	FC.....	\$0.30
U594	VF	\$0.25
U598	VF	\$0.25
U599	VF-XF	\$0.30
U600	VF	\$0.25
U601	VF-XF	FC.....	\$0.30
U602	VF	FC.....	\$0.30
U603	VF	\$0.45
U604	VF	FC.....	\$0.60
U605	VF	\$0.30
U607	VF	FC.....	\$0.35
U608	VF	FC.....	\$0.35
U608b	XF	Bar Tagged.....	\$1.75
U611	VF-XF	FC.....	\$0.40
U612	VF-XF	\$0.40
U619	VF-XF	FC.....	\$0.45
U620	VF	FC.....	\$0.60
U621	VF-XF	FC.....	\$0.40
U623	VF	FC.....	\$0.40
U624	VF	\$0.30
U625	VF-XF	FC.....	\$0.65
U626	VF	FC.....	\$0.25
U629	VF	\$0.35
U639	VF-XF	FC.....	\$0.60
U640	VF-XF	FC.....	\$0.60
U645	VF-XF	FC.....	\$0.50
U646	VF	FC.....	\$0.45
U647	XF	FC.....	\$0.50
U648	VF	FC.....	\$0.45
U649	VF	FC.....	\$0.50
U659	VF-XF	FC.....	\$0.60
U659	XF	FC.....	\$0.75

Please send want list for later cut squares!

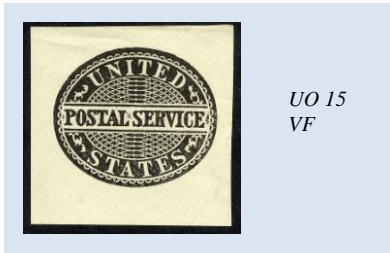
Cut Squares Airmails

UC1	XF-Sup	\$2.50
UC1	VF	FC Border D.....	\$3.00
UC1	VF-XF	\$2.00
UC1	VF	\$1.75
UC2	VF-XF	FC Border B.....	\$7.50
UC3	VF	\$0.75
UC4	VF-XF	\$2.00
UC5	F-VF	No Border.....	\$0.35
UC6	VF NI	\$0.60
UC8b	VF	\$1.00
UC8c	VF	Die 9.....	\$5.50
UC18a	VF	\$0.25
UC25	F-VF	FC.....	\$0.35
UC26	F-VF	FC.....	\$0.30
UC27	XF	FC.....	\$195.00
UC28	XF	FC.....	\$65.00
UC29	XF	FC.....	\$32.50
UC29	Superb	FC.....	\$30.00
UC30	F-VF	FC.....	\$0.45
UC30a	VF	\$0.60
UC31	Superb	FC.....	\$0.75
UC37a	Superb	FC—Tagged.....	\$3.00
UC37a	XF	FC—Tagged.....	\$3.25
UC40	VF	FC.....	\$0.35
UC41	VF-XF	FC.....	\$0.40
UC47	VF	FC.....	\$0.25
UC47	VF	\$0.20

Cut Squares Officials

UO1	F-VF	Used.....	\$5.00
UO2	XF	\$14.00
UO2	F-VF	\$10.00
UO6	XF	\$270.00
UO7	F-VF+	\$1.25
UO7	Fine	\$1.00

Scott	Condition	Description	Price
UO7	XF/Used	\$0.65
UO12	Superb	10 1/2mm.....	\$12.00
UO14	VF-XF	\$4.00
UO14	F-VF	\$2.50
UO14	Fine	\$2.00



UO15
VF

UO15	VF	\$120.00
UO15	VF	Large margins, tiny wrinkle.....	\$100.00
UO16	F-VF	Light Blue.....	\$100.00
UO16	F-VF	\$90.00
UO16	F-VF	Blue, minor soiling.....	\$65.00
UO16	Fine	Light Blue—(small).....	\$50.00
UO17	VF	FC.....	\$5.75
UO17	VF	FC.....	\$5.50
UO17	F-VF	FC.....	\$4.00
UO17	F-VF	\$3.75
UO19	VF	\$995.00
UO20	XF	\$42.50
UO22	XF	36mm x 39mm.....	\$475.00
UO23	F-VF	\$120.00
UO26	XF	\$125.00
WO33	VF-XF	35mm x 37mm.....	\$160.00
UO34	XF-Sup	FC.....	\$75.00
UO34	F-VF	\$40.00
UO35	VF-XF	\$72.50
UO37	VF	FC.....	\$65.00
UO43	VF+	35mm x 40mm.....	\$200.00
UO45	XF+	PFC.....	\$625.00
UO45	XF	36mm x 42mm.....	\$525.00
WO46	VF	\$3.00
UO47	XF	FC.....	\$92.50
UO49	VF	\$9.00
UO51	VF	Used.....	\$6.50
UO53	VF	FC.....	\$4.50
UO53	VF	\$4.25
UO54	Jumbo	\$3.50
UO54	VF	\$2.00
UO56	VF-XF	\$42.00
UO56	VF	\$40.00
UO61	VF	\$33.00
UO65	XF-Sup	41 mm x 43mm, PFC--2 tiny natural spots, <i>not</i> noted on cert, mentioned for accuracy.....	\$495.00
UO66	VF+	35mm x 39mm.....	\$330.00
UO70	VF	NI.....	\$40.00



UO71
XF

UO71	XF	\$165.00
UO71	VF	\$135.00
UO72	Superb	FC.....	\$12.00
UO72	VF	Used.....	\$2.50

Scott	Condition	Description	Price
2OLU1	VF-XF	Boyd City Local.....	\$120.00



2OLU1
VF-XF

Entires

U436 var.	F-VF	2 nd strike inverted, "printers waste", PFC.....	\$150.00
U453Cd	XF	2c on 2c, Die 1, oriental buff, scarce! PFC.....	\$1600.00
U457a	VF	2c on 2c, Die 5, fresh ex-Barkhausen rubber stamp on reverse.....	\$425.00
U462m	XF	Double impression with 2 nd impression foldover extending to back. PFC.....	\$1400.00



U507B Pristine!

U507B	XF	1 1/2 surcharge on 1c blue manila APS cert.....	\$3750.00
U508A	F	PFCbackflap tear opposite side from stamp. Also has faint vertical band mark in center. Would make Superb cut square!.....	\$2600.00
U571a	VF	legal sized.....	\$75.00
U605e	XF	Missing black color.....	\$175.00



U642g XF Missing Color Error

U642g	XF	Error with red omitted, legal sized un-priced in Scott, APS cert.....	\$450.00
U619b	VF	Error -missing rose, tagged, legal sized.....	\$250.00
UC9	VF-XF	\$50.00
UC35a	VF	Error - missing red, great rarity!	\$800.00
UC35b	VF-XF	Error - missing blue. Scarce!	\$900.00

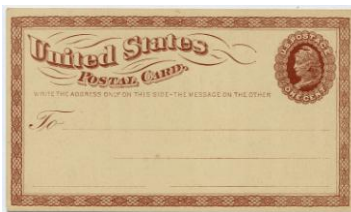
Scott Condition Description Price



UO72a Error VF Entire

UO72a VF Error – manila paper. Extremely scarce!\$1500.00

Scott Condition Description Price



UX1 XF

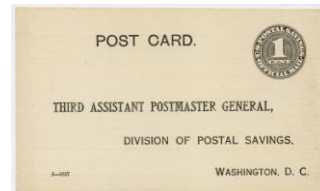
UX1 XF \$260.00
 UX3 XF \$50.00
 UX5 XF \$60.00



UXC1a VF+

Scott Condition Description Price

UXC1a VF+ Deep red color ... \$275.00
 UXC1a F-VF Deep red color, slight water stain top right \$195.00



UZI XF +

UZI XF+ Postal savings – P.O. form on reverse for postal savings transaction \$550.00

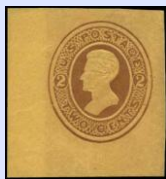
Want Scans?

For anything on this list we would be happy to email you a scan or send a photocopy through the mail. Feel free to ask!

U.S. Premium Cut Squares & Entires

Cut Squares

U5 F-VF—33 x 34 mm, faint corner scuff at top (cv \$5,750.00).....\$2,000.00
 U6 Fine—32 x 35mm, thins (cv\$4,250.00)\$1,250.00
 U7 F-VF, Full Corner—33 x 37 mm, faint toning spot at top which could be trimmed (cv \$5,000.00).....\$2,500.00
 U30 VF-XF 36 x 43, Pristine(cv 2,000.00)\$1,600.00
 U31 F-VF—26 x 29 mm, (cv \$3,500.00)\$1,750.00
 U33 VF—27 x 31 mm, Rich color!! (cv \$1,450.00).....\$850.00



U125 F-VF

U125 F-VF—Huge for scarce cut square—39 x 41, 9mm lightened area at left due to envelope band (cv. \$18,000.00).....\$10,000.00
 U272 XF—38 x 41 mm, Perfect centering, (cv +/- \$7,000.00 based on earlier prices, Scott dropped cut square price in error)\$6,250.00
 U350a Color Error XF—50 x 51 mm, Huge! (cv \$850.00).....\$700.00
 U418b Color Error—Superb—41 x 42 mm, (cv \$3,500.00).....\$2,800.00
 U418c Color Error—Superb—42 x 42 mm, (cv \$3,250.00).....\$2,600.00

U463 VF, Full Corner, 39 x 39 mm, (\$800.00)\$550.00



U350a Color Error

U464 Superb, Full Corner—57 x 51 mm, Jumbo, (cv \$900.00).....\$900.00
 UO18 VF-XF—36 x 39 mm, (cv \$500.00)\$375.00
 UO24 XF-Superb—37 x 40 mm, (cv \$6,000.00)\$5,500.00
 UO43 Superb—41 x 43 mm, (cv \$475.00)\$350.00
 UO62 VF—33 x 36 mm, (cv \$525.00)\$300.00
 Scans/Photocopies Available—Call 1-800-947-8267

Mint Entires

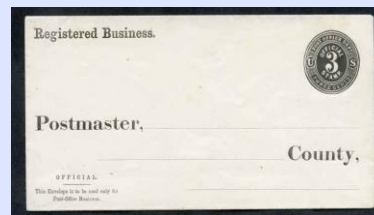
U18a VF—Fresh & brilliant entire, tiny inclusions spot. (cv. \$600.00).....\$500.00



U37 VF

U37 VF—lovely pink shade on orange. Natural stain spot. (cv. \$4,500.00)\$3,750.00
 U42 VF—legal size entire w/faint internal crease at top center, (cv. \$475.00).....\$350.00

U42 VF—legal size entire, faintly toned at right, few light bends, (cv. \$475.00) \$300.00
 U48 VF—nat. inclusion (cv \$4,500.00)\$3,000.00
 U156 XF—Pristine, (cv. \$2,000.00) \$2,000.00
 U168 F-VF—few minute toning spots + very tiny back flap tear. Extremely Rare! (cv \$4,250.00) \$2,250.00
 U247 XF—Pristine with printed corner (cv. \$3,000.00)..... \$3,000.00
 U249XF—Pristine, 2¢ on fawn, “If not delivered...” printed corner card, Ex. Barkhausen, stamped on reverse. (cv \$1,500.00) \$1,500.00
 U418d 5¢ Blue on Blue error, XF—Pristine—Probably the finest known. (cv. 6,250.00) \$5,500.00
 U466Ae surcharge on Die 7, VF+, very slight stain center. Scarce!! (cv. \$1,200.00) \$900.00
 U466B 2¢ on 2¢ Die 1, XF—Pristine entire. Finest known, (cv \$22,500.00)..... \$20,000.00
 U480XF—pencil signed on reverse by J. M. Bartels & rubber stamped Barkhausen, both famous names in 1910-20’s Philately (cv \$7,000.00) \$6,000.00
 U508A1 ½ on 1¢ VF with slight paper bend in center. (cv. \$5,250.00 entire, cut square cv \$3,500.00) \$3,500.00
 UO8 VF—pre-printed (as always), 2 natural inclusion spots. Very Fresh! (cv. \$4,200.00)\$3,500.00



UO8 VF